



**SWITZERLAND
INNOVATION
PARK ZURICH**

THE FIRST OFFICES AT SWITZERLAND INNOVATION PARK ZURICH

- ATTRACTIVE OFFICES AT STETTBAACH RAILWAY STATION (DUEBENDORF)
- START OF INNOVATION PARK ZURICH ON DECENTRALISED AREAS
- ACCESS TO SERVICES AND INFRASTRUCTURE OF INNOVATION PARK ZURICH
- GUARANTEED LOCATION AT INNOVATION PARK ZURICH FROM 2018/2019



INNOVATION PARK ZURICH: WE START DECENTRALLY

Switzerland Innovation Park Zurich is creating a new platform for research, development and innovation on the premises of Duebendorf airfield. The park is promoting the collaboration and exchange of knowledge between the renowned Zurich colleges, research institutions and universities of applied sciences with the private sector. Researchers and developers pursue the goal of accelerating the implementation of research results into marketable products and services.

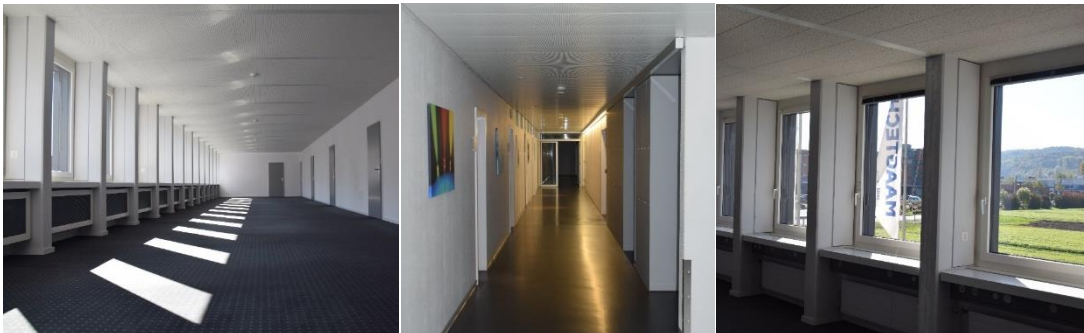
The actually usable area on the premises of Duebendorf airfield is not yet available to businesses due to planning delays and objections. Nevertheless, we wish to offer interested companies the opportunity to settle in the proximity of the planned park in an attractive environment. The offering at Maagtechnic AG in Stettbach is temporary and guarantees users from 2018/2019 the possibility to settle at the future Innovation Park. Partners from the metropolitan area of Zurich are offering us areas on a temporary basis. Depending on need, subject focus and research area, you can choose the suitable premises and infrastructures. Be it office, laboratory, workshop or testing grounds - we have the space for your new ideas and you have access to the park's existing (and consistently growing) infrastructure.

OFFICES AT MAAGTECHNIC AG IN STETTBACH (DUEBENDORF)

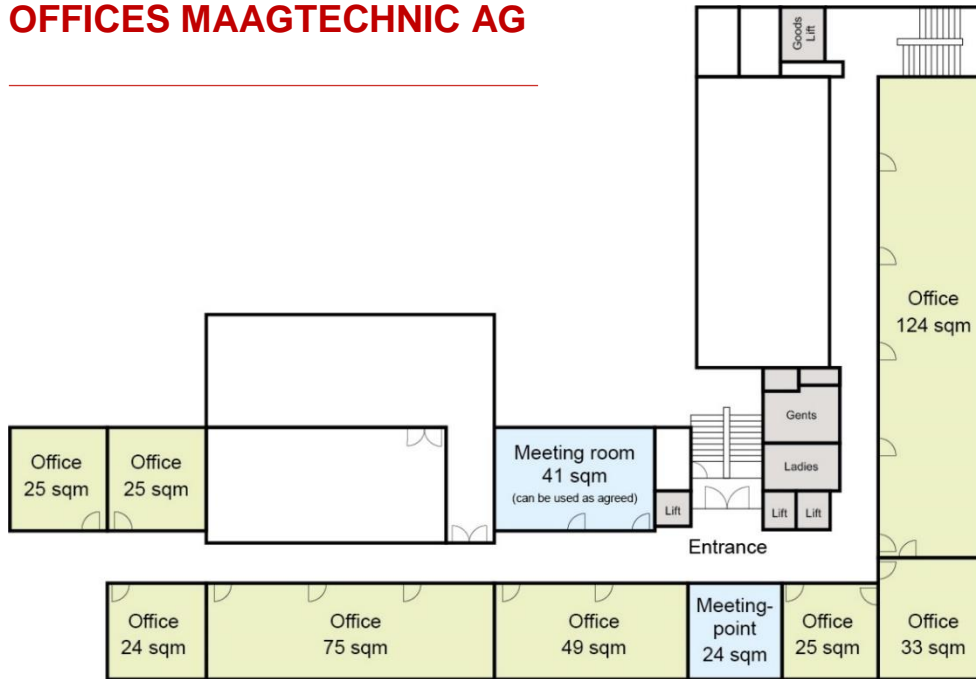
Maagtechnic AG is a technical trading, manufacturing and services company with five operating companies in Switzerland. The site of its head office in Duebendorf is in area favorably located for traffic: 5 minutes to the A1 motorway (connections to Berne, Zurich-Kloten Airport or St. Gallen). 5 minutes on foot to Stettbach railway station, with regular connections to the city centre every 5 minutes. 2 minutes on foot to Glattalbahn, which takes you straight to Zurich-Kloten Airport within 20 minutes.

The area around Stettbach railway station has been upgraded in recent years by companies such as Helsana, Lycée Français de Zurich or the new Samsung Hall.

Sonnentalstrasse 8, 8600 Duebendorf



OFFICES MAAGTECHNIC AG



TERMS / PRICES

Attractive offices fitted with all technical possibilities ranging from 24 sqm to 124 sqm are available on the first floor. Parking spaces in the underground garage may be used by employees and are included in the rent.

Costs: CHF 150 per sqm and year

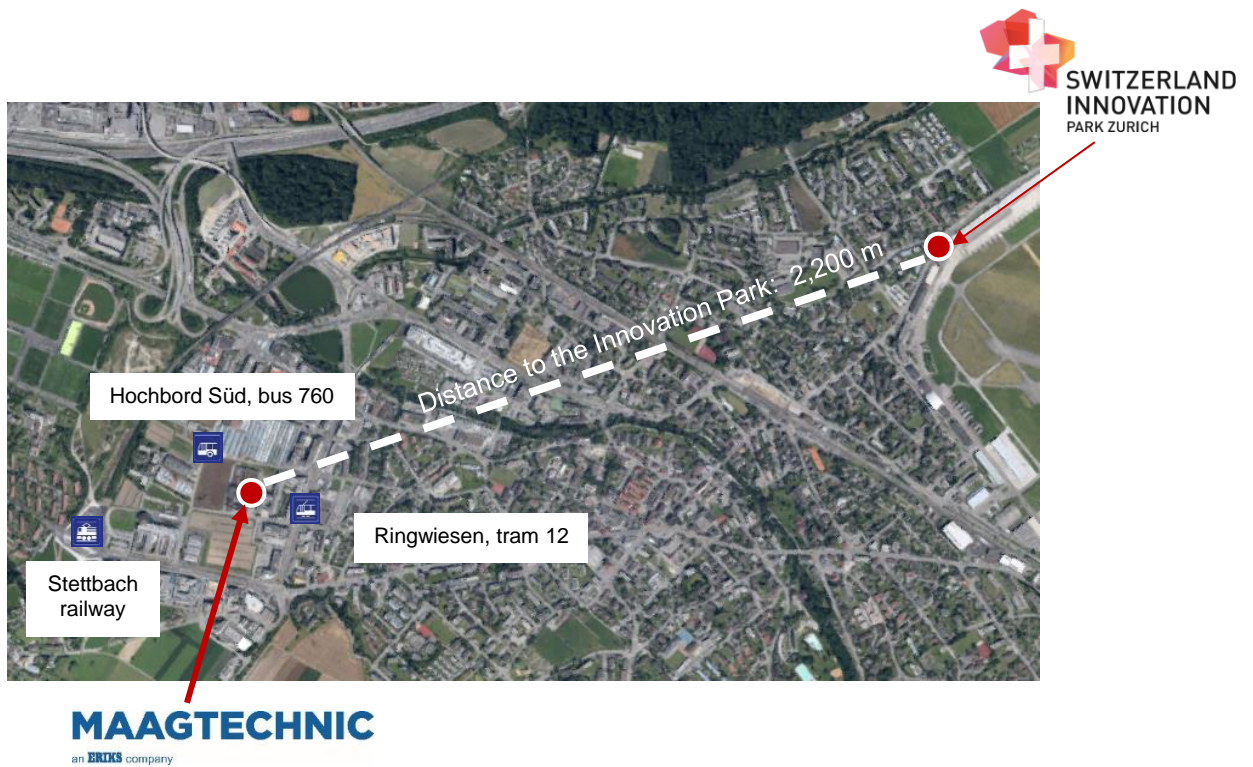
Plus ancillary costs: about CHF 50 per sqm and year

SERVICES OF THE INNOVATION PARK

We offer companies settling temporarily in the «forecourt of the Innovation Park» the following range of services:

- attractive tenancy terms, access to infrastructures of the park's partners
- settlement process that permits the use of the «Switzerland Innovation» label
- guaranteed area at the Innovation Park on the premises of Duebendorf airfield from around 2018/2019
- use of the infrastructure of the Innovation Park in Duebendorf (H³, pavilion, testing infrastructure from 2019 such as hangar, robot playground, etc.)
- access to the Innovation Park's college partners: ETH, University of Zurich, Empa, Zurich University of Applied Sciences (ZHAW), Zurich University of the Arts (ZHdK), University of Applied Sciences in Business Administration Zurich (HWZ)
- participation in innovation events at the Innovation Park

SITE PLAN



Interested?

Request a detailed offer at zurich@switzerland-innovation.com.

CONTACT

Switzerland Innovation Park Zurich
Wangenstrasse 68, 8600 Duebendorf
Tel. +41 43 259 49 10
zurich@switzerland-innovation.com
www.switzerland-innovation.com/zurich